

So Does Our Partner Surfrider Foundation



A grass-roots environmental organization dedicated to the protection and enjoyment of oceans, waves and beaches through a powerful activist network.

We Want To Affect Profound Behavioral Change



You Probably Know About Surfrider

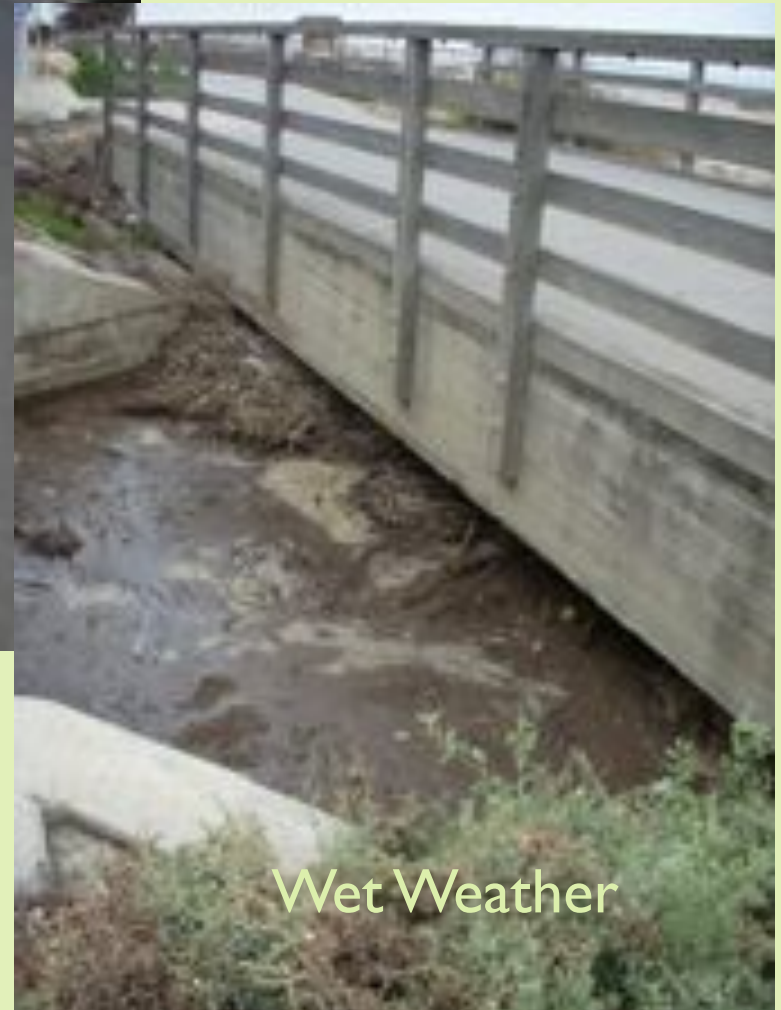
From
Beach Cleanups

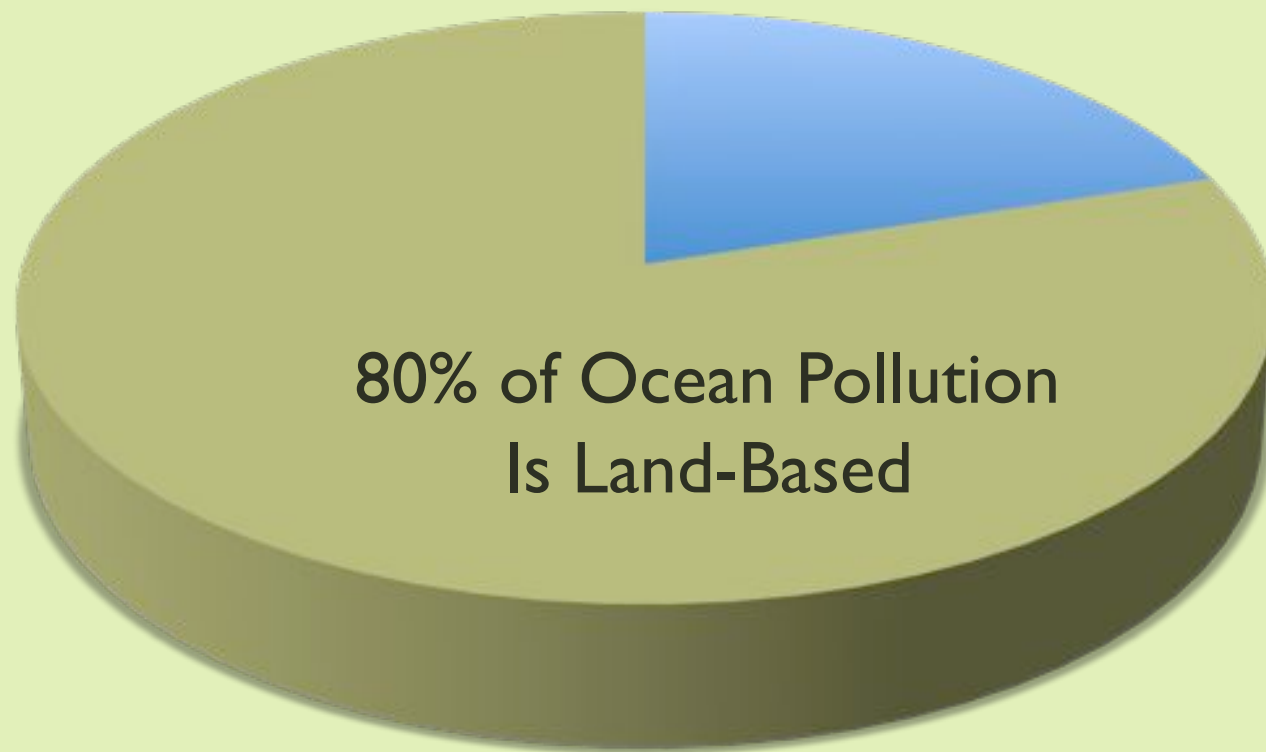


Cool
Campaigns



And Activism Surrounding Ocean & Beach Health





Something More Than Cleanup and Testing Is Needed



Image courtesy of Heal the Bay





We Have Water Supply And Water Quality Problems
Yet We Throw Away Stormwater!

Current Government Structure Doesn't Support An Integrated Approach



KnowYourH2O.org



The Cycle Of Insanity

The Real Story of Water

We Want You To Be Confident, Engaged, Empowered!

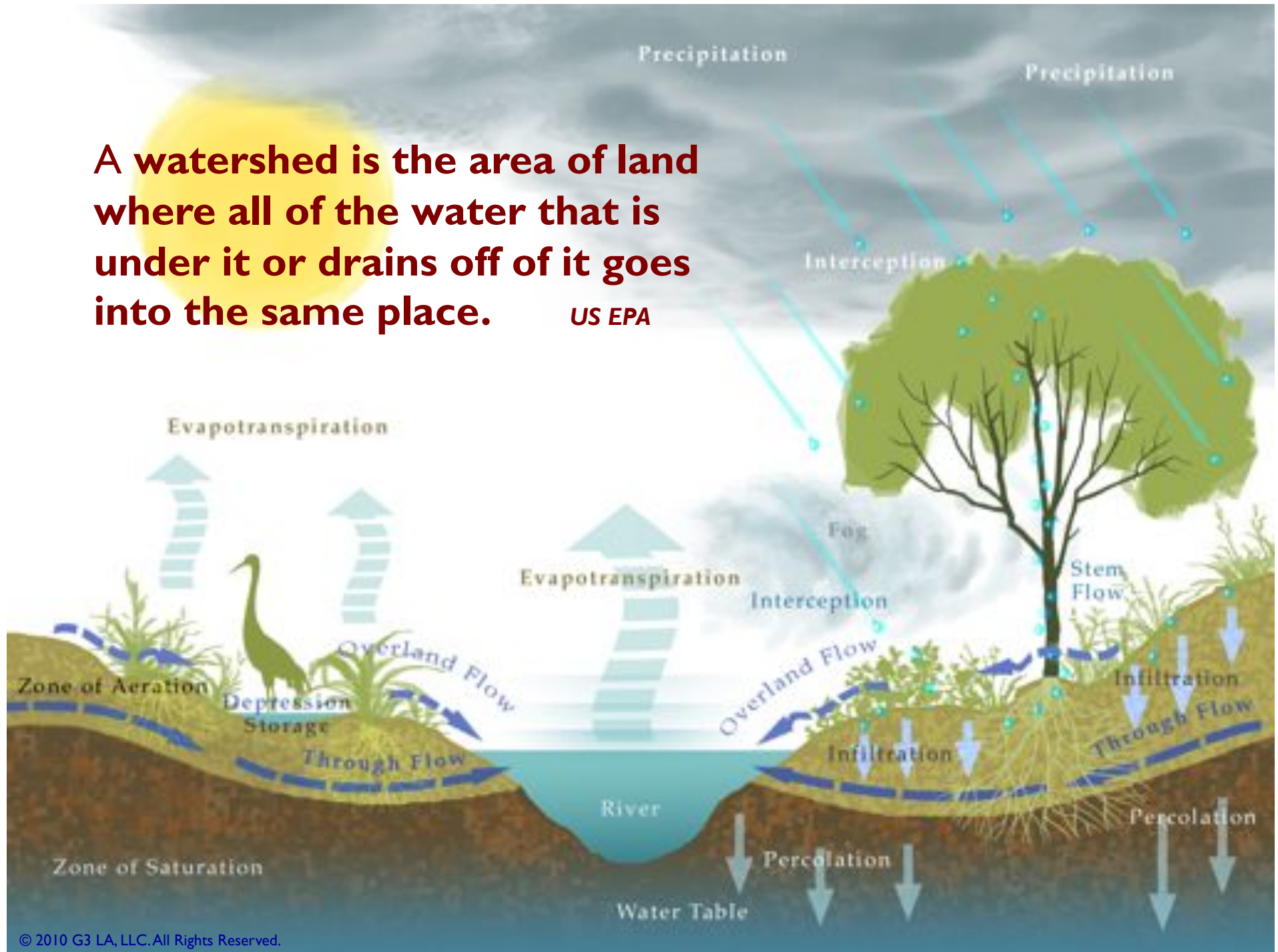


So We Developed This Program

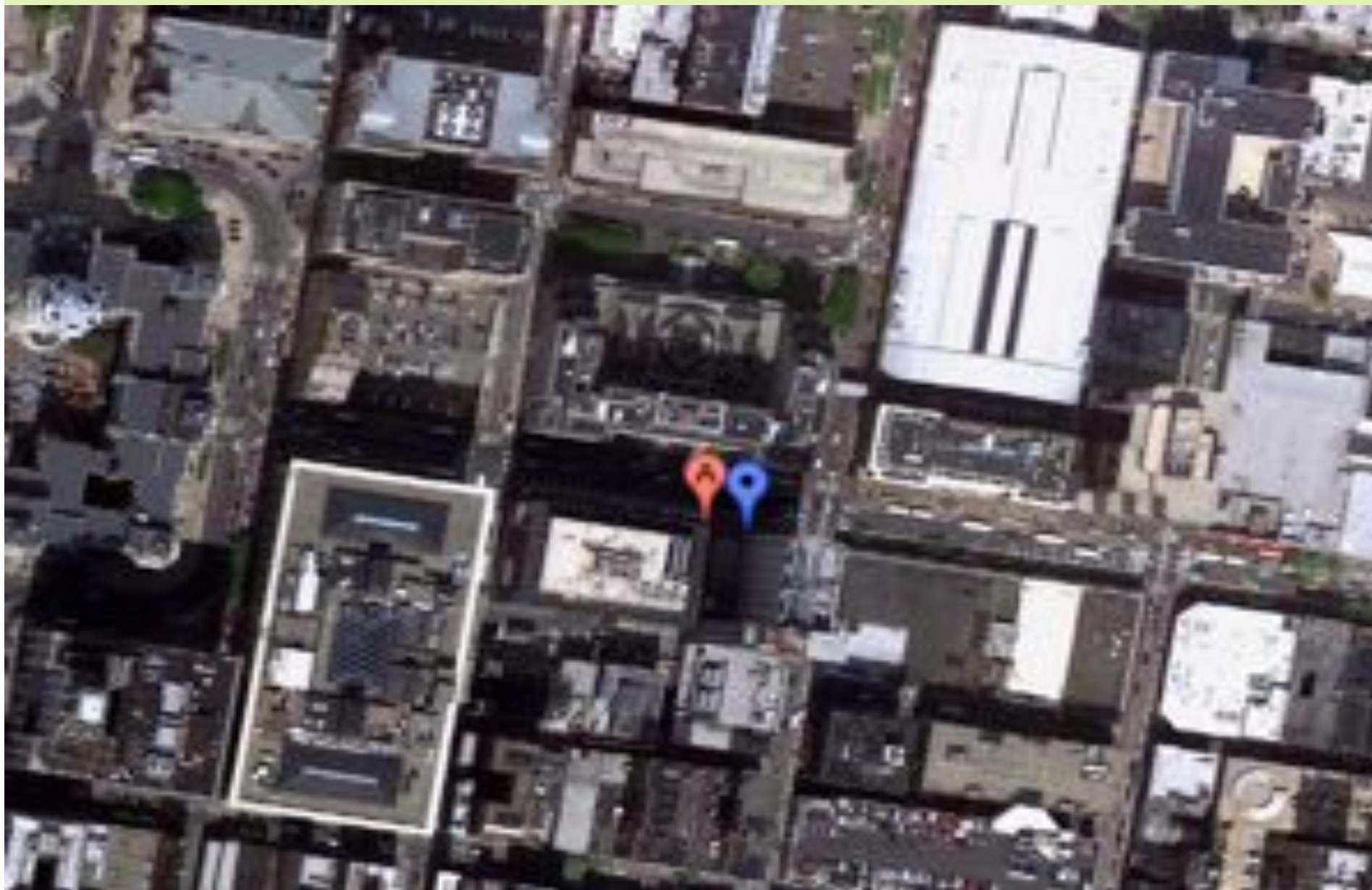


A watershed is the area of land where all of the water that is under it or drains off of it goes into the same place.

US EPA



Even Though You May Be Here Today



A satellite map showing a watershed area. A dark blue river or stream flows through the center of the image, branching out into smaller tributaries. The surrounding land is a mix of green, indicating vegetation, and brownish-grey, indicating urban or developed areas. A red location pin with a white 'A' is placed on the river, marking a specific point of interest. The text 'Your Property Is Part of A Watershed' is overlaid in the upper left, and 'Your Landscape Choices Affect That Watershed' is overlaid in the lower left.

Your Property Is Part of A Watershed

Your Landscape Choices Affect That Watershed

Start Thinking of Your Home As **A Mini-Watershed**



Conservation



Permeability



Retention

Copyright 2011, G3LA LLC. All Rights Reserved.

Apply OFG Principles of C.P.R. To Revive Waterways

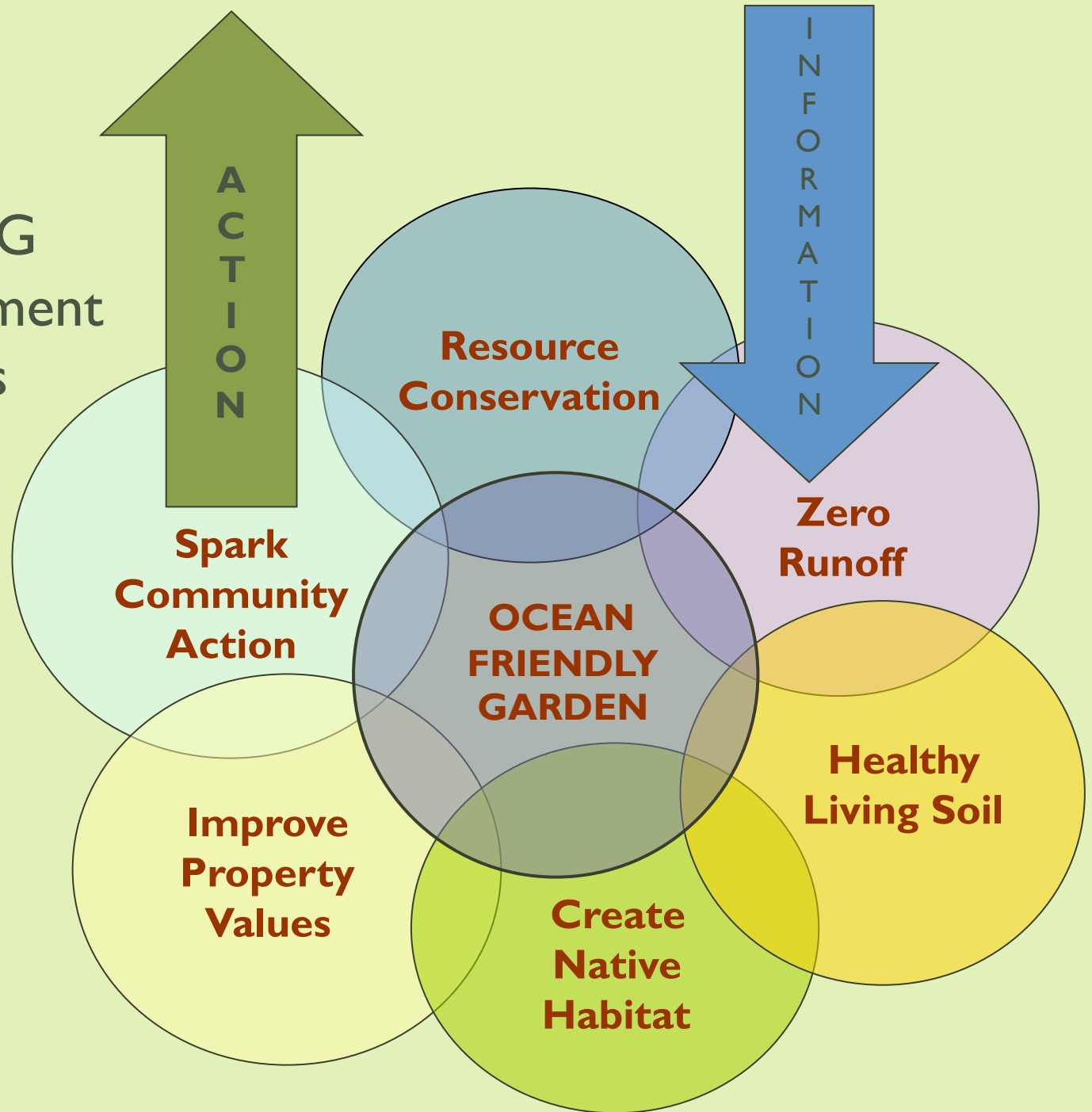


C.P.R. Applies Whether You Live At The Beach...

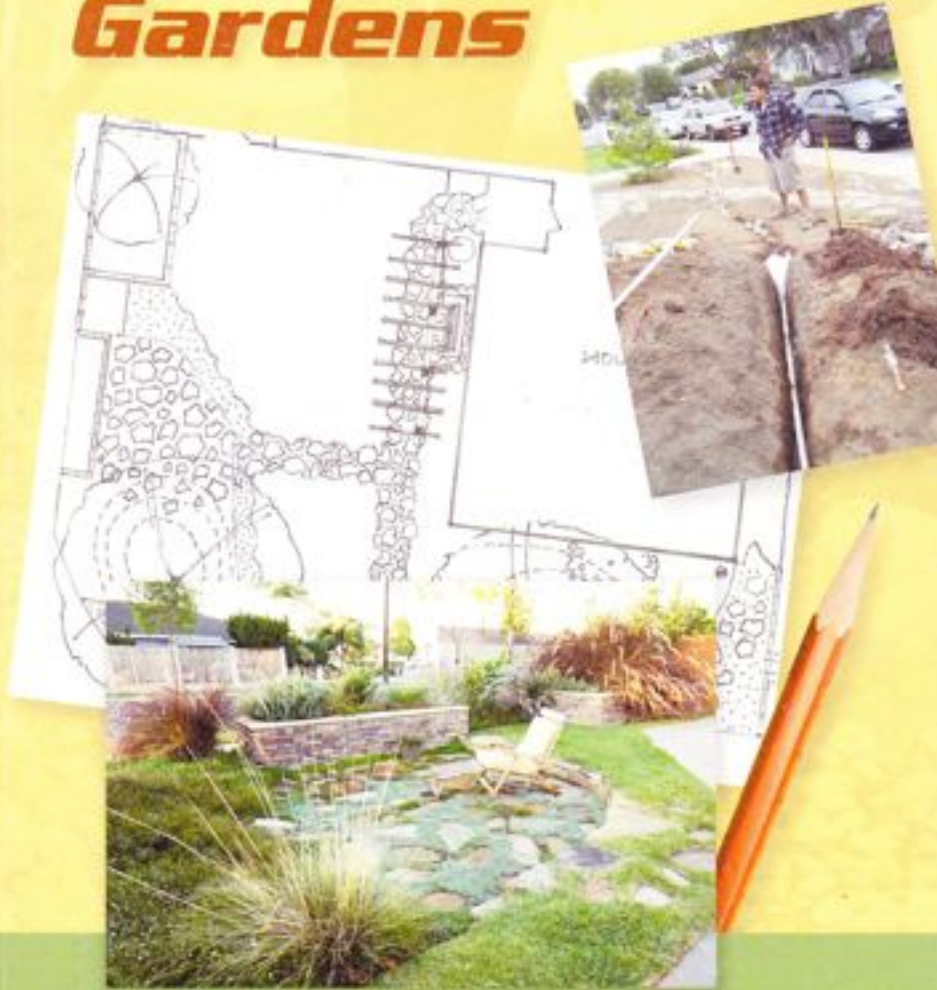


Or Not.

Utilize OFG
Best Management
Practices



Ocean Friendly Gardens



**A How-To Gardening Guide to Help
Restore a Healthy Coast and Ocean**

DOUGLAS KENT / EDITED BY JOE GEEVER

SURFRIDER FOUNDATION

And Implement
The Program

Ocean Friendly Gardens | Surfrider Foundation

http://www.surfrider.org/programs/entry/ocean-friendly-gardens

Q: surfrider

C3, The Cre... Landscapes C3, The Cre... Projects Stakescape - Home Santa Monica How To + WordPress Edit Wordpress Apple Yahoo! Google Maps YouTube Wikipedia

Ocean Friendly Gardens | Surfrider

Protecting Oceans, Waves and Beaches since 1984

MY ACCOUNT

SURFRIDER FOUNDATION

SIGN UP FOR OUR WEEKLY SOUP NEWSLETTER!

email ZIP CODE SIGN UP

MISSION CAMPAIGNS PROGRAMS CHAPTERS CURRENTS STORE TAKE ACTION JOIN!

Programs Home

OCEAN FRIENDLY GARDENS

Intro Resources Blog Contact

OCEAN FRIENDLY GARDENS SURFRIDER FOUNDATION

What does a garden have to do with the ocean?

Urban runoff is often the primary source of ocean pollution. But where does it come from? Gardens and adjacent hardscape like driveways can be a major source: pesticides and herbicides, synthetic fertilizers, sediment, oil and brake pad dust, dog poo, etc. It can run off the property during rain storms and during dry periods with sprinklers overwatering and overshooting the landscape. The use of gas-powered equipment to mow lawns, prune and haul away over-planted vegetation also contribute to air pollution - which eventually settles into water bodies.

TAKE ACTION

Join a Chapter Today

Surfrider Foundation chapters are all volunteer run. Check out the chapter near you and get involved in fun and meaningful ways to protect our...

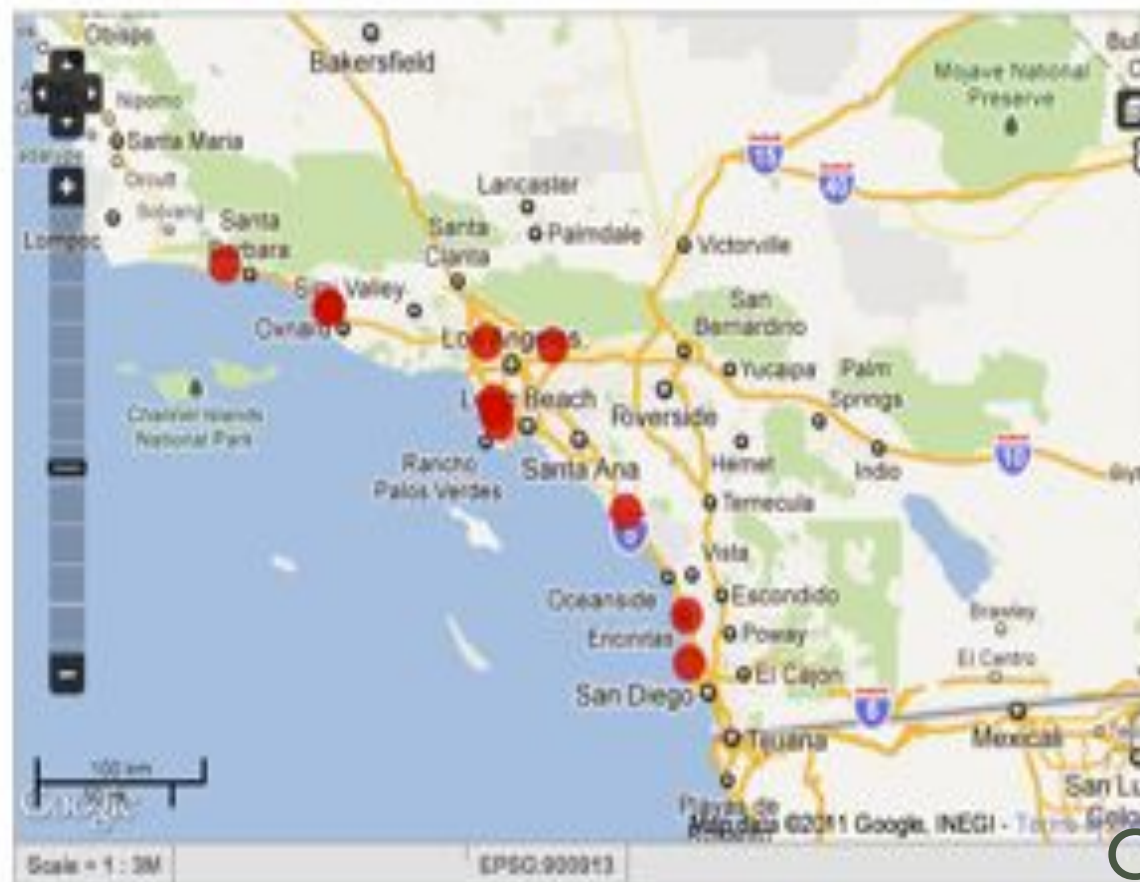
GET INVOLVED

Visit the Action Center

www.oceanfriendlygardens.org

An Ocean Friendly Garden (OFG) is a garden that applies CPR – Conservation, Permeability, and Retention – to revive the health of our watersheds and oceans. Please tell us about your yard. Click "Instructions" button to start.

FILTERS + **REPORTS** NEWS PICTURES VIDEO ALL



+ CATEGORY FILTER [HIDE]

ALL CATEGORIES

PERMEABILITY

CONSERVATION

RETENTION

How to Report

1. By sending an email to mrauscher@surfrider.org
2. By filing this form

We Track
Ocean Friendly Gardens

And Give People
Yard Signs
When They Apply
C.P.R.



We Conduct OFG Classes By Partnering With
Water Agencies (Conservation) & Cities (Retention)



Here's A West Basin MWD OFG Class In Hawthorne, CA

Where We Talk About Resource Conservation



And Build Awareness About Runoff



While The Internet
And Social Media
Play Important Roles
In Getting Out
The Word...



Volunteer Outreach Is The Backbone Of OFG



That Means Taking The Message To Where People Gather



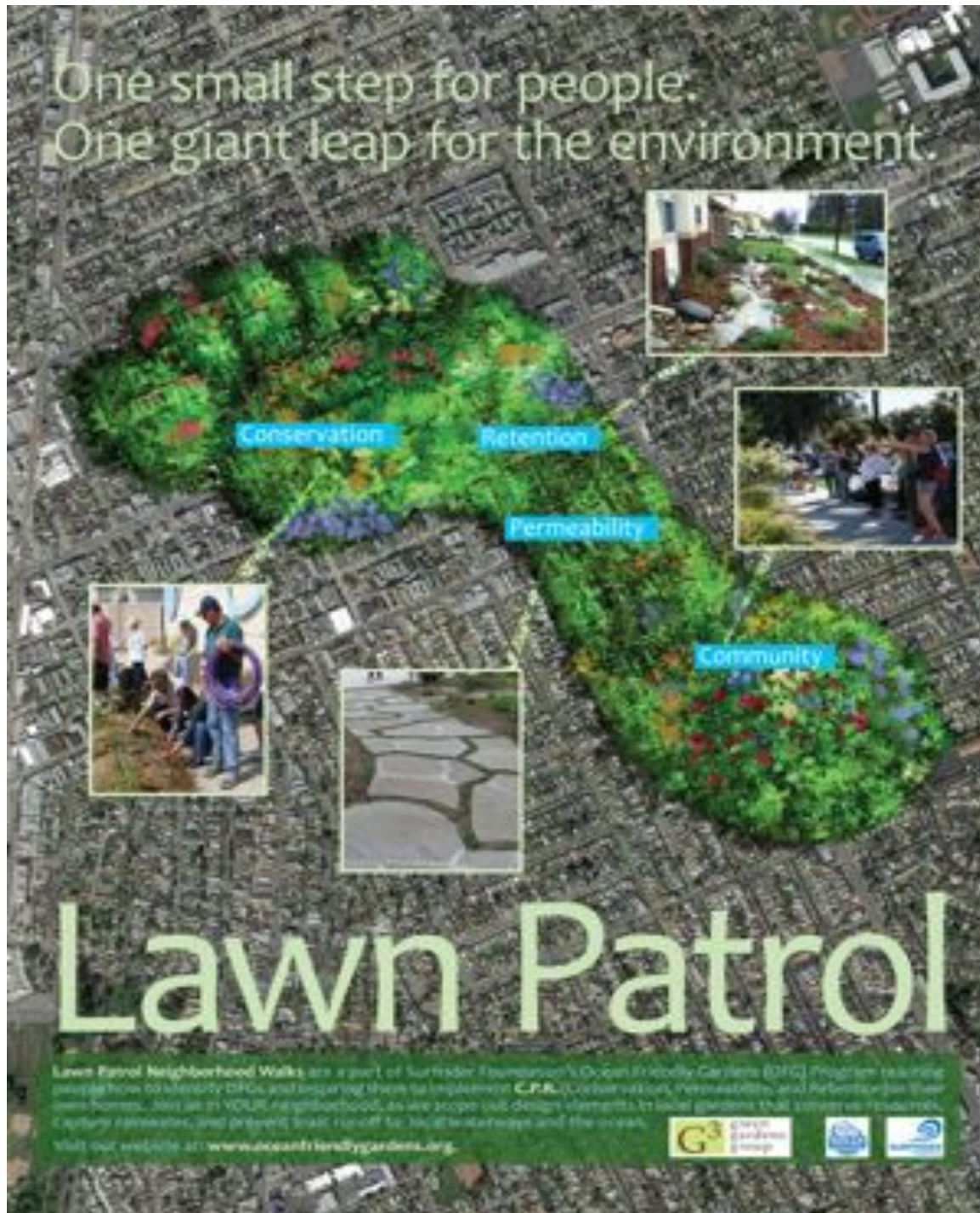
Grocery Stores

Farmers' Markets



Creating a Person-to-Person Network





To Raise Community
Awareness
We Developed
Lawn Patrol
Neighborhood Walks

Lawn Patrols Are Educational, Social And FUN!



A photograph of a suburban house with a light-colored exterior and a dark roof. A large tree is on the left, and a concrete sidewalk leads from the foreground towards the house. The image is overlaid with various text labels in different colors and fonts, highlighting environmental and sustainability issues associated with such a landscape.

We Train Your Eyes

Poor Air Quality

No Shade

No Food Security

**No Rainwater
Harvesting**

No Habitat

Green waste

Unused Landscape

Evaporation

Overspray

Compacted Soil

**Impermeable
Surfaces**

**Wasted Resources &
Poor Quality of Life**

Runoff

We Look For Gardens That Are Ocean Friendly



And Educate About Gardens That Are Not



OCEAN FRIENDLY GARDENS PROGRAM FROM THE SURFRIDER FOUNDATION

LAWN PATROL STOPPED BY, AND WE LOVE YOUR GARDEN!



DATE:

TIME:

We toured your neighborhood, and noticed your garden has many features of an Ocean Friendly Garden which utilizes CPR:

☐ Conservation

☐ Permeability

☐ Retention

Comments:

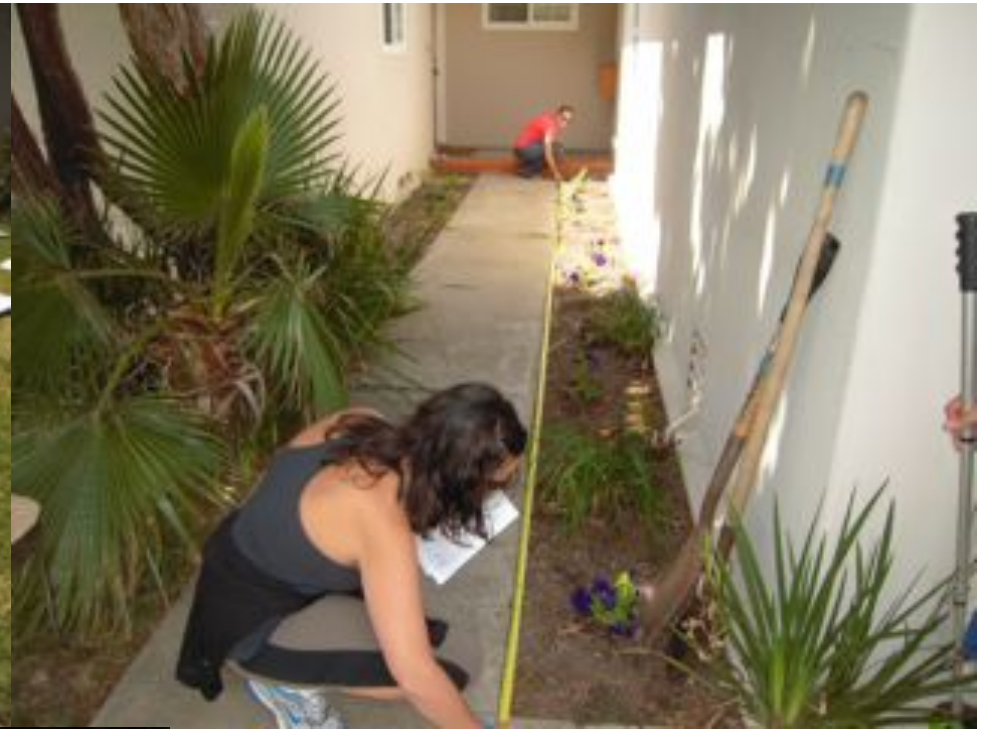
Great LEED GOLD House!

Rainchain is connected to stormdrain. Why not redirect it into the landscape and reduce runoff? A Hands-on Workshop will show you HOW and build your confidence!

We Added Peer-to-Peer Neighborhood Based Learning



Hands-on Workshop (HOW)



Evaluate Your Site



Determine Actual Water Use

Water Use Calculations

$$1 \times 748 \text{ gal.}$$

$$24 \times 748 = \underline{18,000} / \text{mo.}$$

$$1'' = .625 \text{ gal.}$$

$$1'' \text{ on } 1000 = \underline{625} \text{ gal.}$$

$$1450 \text{ sf. roof}$$

$$\frac{1}{2} \text{ captured} =$$

$$725 \text{ sf} = \underline{450} \text{ gal} / '' \text{ rain}$$

$$11 \times \underline{450} = \underline{4,950} \text{ gal.}$$

Runoff Calculations



Surfrider Foundation
Public Education Program

And Propose Design Solutions

SLOW IT

SPREAD IT

SINK IT

Sidewalk

gravel
mulch
rock



Then Homeowners Invite Family & Friends To Garden Raising



Surfrider Brings Media And Volunteers: GAP Workday



Homeowner Agrees To Spread The Word

Reduced Water Use by 90%
Zero Dry-Weather Runoff
Zero Wet-Weather Runoff



And The Next Lawn Patrol Starts With That OFG





West Basin MWD: Edward C. Little Water Recycling Facility

Our Partners Facilitate
Grant-Funded OFG
Demonstration
Projects



G3 Associates Teach HOWs

Gravelpave Grid Laid on Sandy Base



G3 Hands On Workshops (HOWs)



Hands-On Builds Confidence





West Basin MWD Edward C. Little
Water Treatment Facility
Demonstration Garden



Reduced Water Use by 80%
Zero Dry-Weather Runoff
Greatly Reduced Wet-Weather Runoff





**People Learn Best
By Doing**

**This Guy Heard About The HOW At
The Hawthorne Class**

Where Surfrider Is Also Conducting A GAP Workday



Turns Out He's The Head Librarian In Hawthorne



He Learns Many Skills
Including Sheet Mulching
To Remove Turf
Without Chemicals

And Sees That
The Kids
Are Learning Too





At This Guy's House

He Invites The Librarian In Lawndale To A GAP Workday



Where She Learns About OFG



And Sees How Much The Kids Are Learning Too

She Has An Idea For An OFG Demonstration Project

1,300 Sq. Ft. Lawn Behind the Lawndale Library





Together We Found
Some Funding
(Conservation &
Retention)

West Basin MWD, Metropolitan Water
District of Southern California, Surfrider,
G3, Local Businesses, Teen Friends of the
Library



This Guy Is Paying It Forward



To Conduct A
Site Evaluation HOW

This Guy Learns To
Build His Own OFG



Maintenance &
Stewardship HOW



Including These
Homeowners

The Garden Was Built
With Paid Professionals
And Volunteers





Lawndale Ocean Unfriendly Garden



Reduced Water Use by 80%
Zero Dry-Weather Runoff
Zero Wet-Weather Runoff



- 
- ✓ Get An OFG Design
 - ✓ Join Surfrider
 - ✓ Pay For Professional Design Review
 - ✓ Pay For And Gather All Materials
 - ✓ Invite Family, (2) Friends, & (3) Neighbors
 - ✓ Host The Food
 - ✓ Participate & Learn
 - ✓ Pay It Forward
 - ✓ Lead Lawn Patrol & Organize Events

Turns Out They Want An OFG At Their Home Too

Volunteers Bring Skills From Previous Workdays





And They Teach Others About OFG BMPs



Building Another OFG



WLAM Watershed Basics Class





Lawndale Library OFG



WLAM Christien GAP Workday



WLAM Curran GAP Workday

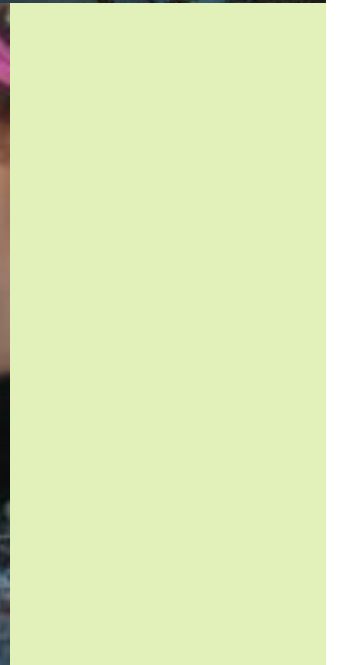
WLAM Lawn Patrol



ELLE/Aveno/SF Franklin Elementary OFG



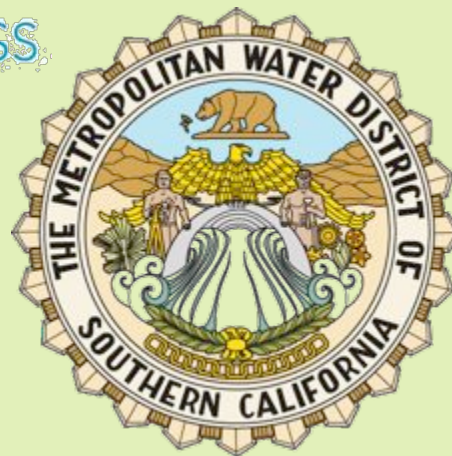
Franklin Elementary Education





WATER: DO MORE WITH LESS

generation
water



**No ONE Organization
or Agency Can Do It
ALONE**



OFG Requires An **Integrated** Approach



When one tugs on a thing in Nature,
he finds it attached to the entire
world. John Muir

- ✧ Program Content Includes Conservation & Retention
- ✧ Professional Leadership & Support
- ✧ Multiple Funding Partners
- ✧ Public Demonstration Gardens
- ✧ Multiple NGOs

An aerial photograph of a residential neighborhood. The image shows a grid of streets with houses, trees, and some swimming pools. The text is overlaid in the center of the image.

**ALL 22 HOMES
ON THIS
STREET HAVE
LANDSCAPE
CHOICES
GOING TO THE
OCEAN**

**CHANGE IS MADE
ONE
OCEAN FRIENDLY
GARDEN
AT A TIME**



